



## Company Profile

Kapelan Bio-Imaging is a leading provider of bioinformatics software. The company develops easy-to-use solutions for molecular biology research. Some small objects may be hard to recognize by research staff, while bio imaging brings innovative solutions. In this fast-growing market segment, Kapelan Bio-Imaging provides universities, pharmaceutical companies and diagnostic laboratories with powerful bioinformatics solutions.

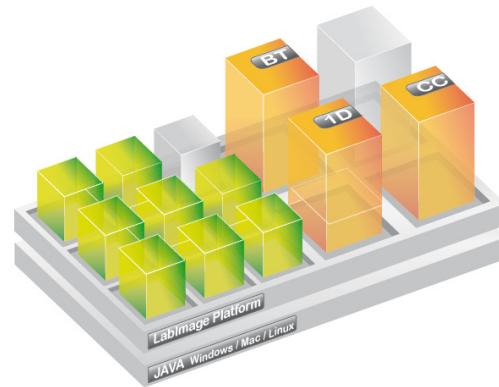
LabImage, the company's powerful imaging platform, stands for excellent user interaction and optimal workflow support. Requested by leading companies worldwide, its high-quality software products range from ready-to-use software modules to customer-specific development projects.

Headquartered in Leipzig, Germany, Kapelan Bio-Imaging has built a global partner network and distributes its cutting-edge software solutions to research institutes and laboratories throughout the world.

## Mission Statement

Kapelan Bio-Imaging supports the scientific community by providing easy-to-use software, which reflects and facilitates the everyday workflow in the laboratory. Customer satisfaction is the driving force for this innovative approach and the company continues to build upon and expand its excellent customer relationships.

Motivated employees, a broad range of experience and continuous improvement processes have laid the foundation for on-going success.



Working in close cooperation with dedicated researchers worldwide, the company strives to provide the best level of integration into the laboratory infrastructure and continually enhances the powerful LabImage platform. The company's goal is to establish and hold a strong top position in bio imaging for many years to come, ultimately serving the worldwide research community.

## Company History

A spin-off of a German diagnostics specialist in cancer prevention, Kapelan Bio-Imaging launched its first software product for 1D gel analysis in 1999. In the next few years, the company developed several additional bioinformatics solutions, including software for fluorescence imaging and blot analysis. After Kapelan Bio-Imaging successfully introduced the LabImage platform in 2005, the software was subsequently extended to better serve the needs of research institutes as well as the pharmaceutical and diagnostics industry. With a worldwide outreach and a fast-growing network of partners and resellers, Kapelan Bio-Imaging boasts a strong integration into the German as well as the international research community and is ideally positioned to become a market leader in bioinformatics for molecular imaging.



## Corporate Team

Olaf Brenn, the CEO and co-founder of Kapelan Bio-Imaging, knows the diagnostics business inside out. With a background in business engineering, he brings fourteen years of work experience in diagnostics to Kapelan's software projects and has gained experience both in product development and marketing.

His team includes a growing number of dedicated software programmers as well as highly-qualified bioinformatics scientists, supported by a close-knit network of researchers.

## Products and Services

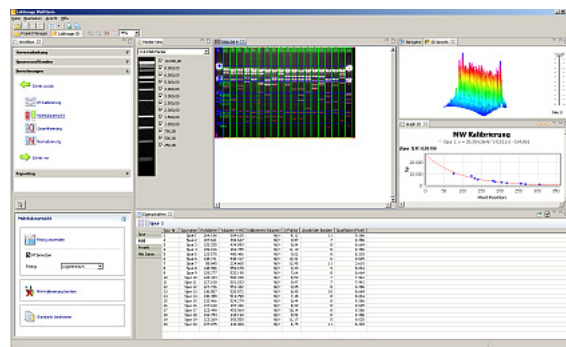
LabImage, the company's powerful imaging platform, stands for excellent user interaction and optimal workflow support. Requested by leading companies worldwide, its high-quality software products range from ready-to-use software modules to customer-specific development projects.

Kapelan Bio-Imaging is dedicated to providing easy-to-use software solutions even within a regulated environment. A specific module turns every LabImage application into a software package compliant with FDA 21 CFR part 11 regulations. The platform offers an automated evaluation of imaging systems, providing device control for high throughput – including 1D electrophoresis, colony counting, arrays and blots and other morphology-based testing techniques.

**LabImage 1D** gel analysis (LabImage 1D) is a flexible solution with strong image analysis algorithms, applicable also for DNA or protein testing and western blotting techniques.

Due to its workflow-based concept, this application has become a prime example of software usability. Based on the latest technology, this application works with both Mac and the latest Windows versions and requires no special user training.

The platform offers an automated evaluation of imaging systems, providing device control for high throughput – including 1D electrophoresis, colony counting, arrays and blots and other morphology-based testing techniques.



Screenshot of LabImage 1D - one of the applications in the LabImage Platform.

**LabImage Colony Counting** (LabImage CC) automatically analyses colony plates in microbiological laboratories by electronically counting colonies of bacteria or other micro organisms. Boasting an excellent usability concept and state-of-the-art algorithms, the software will identify individual areas of dark and light according to automatic or user-set thresholds, count the resulting contrasting spots and deliver the results within just seconds.